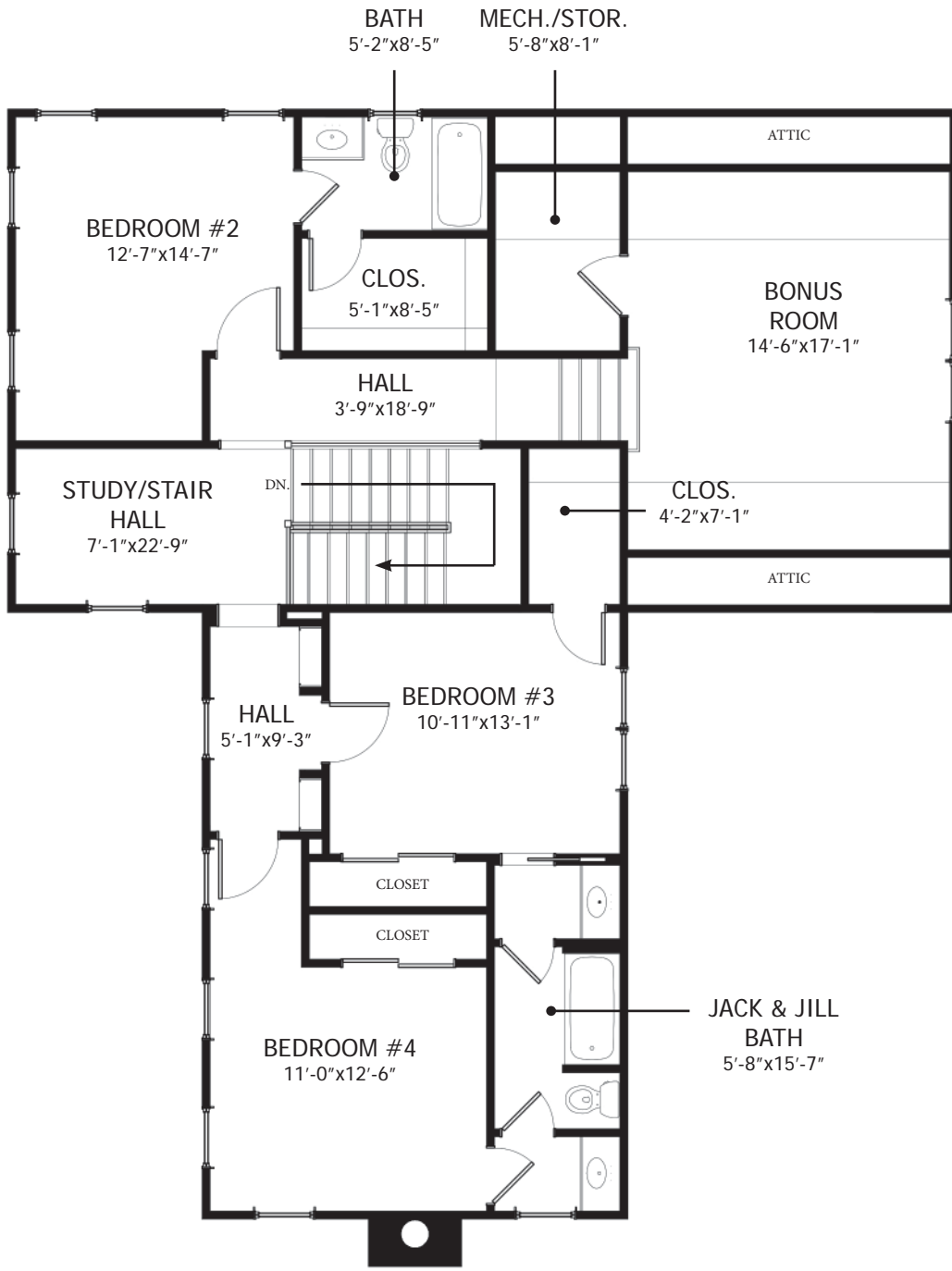


| SQUARE FOOTAGE                  |            |
|---------------------------------|------------|
| <b>FIRST FLOOR</b>              |            |
| CONDITIONED                     | 1,472 S.F. |
| PORCHES                         | 137 S.F.   |
| GARAGE                          | 453 S.F.   |
| <b>SECOND FLOOR</b>             |            |
| CONDITIONED                     | 1,401 S.F. |
| PORCHES                         | 0 S.F.     |
| TOTAL HEATED                    | 2,873 S.F. |
| TOTAL SQUARE FOOTAGE UNDER ROOF |            |
| 3,463 S.F.                      |            |

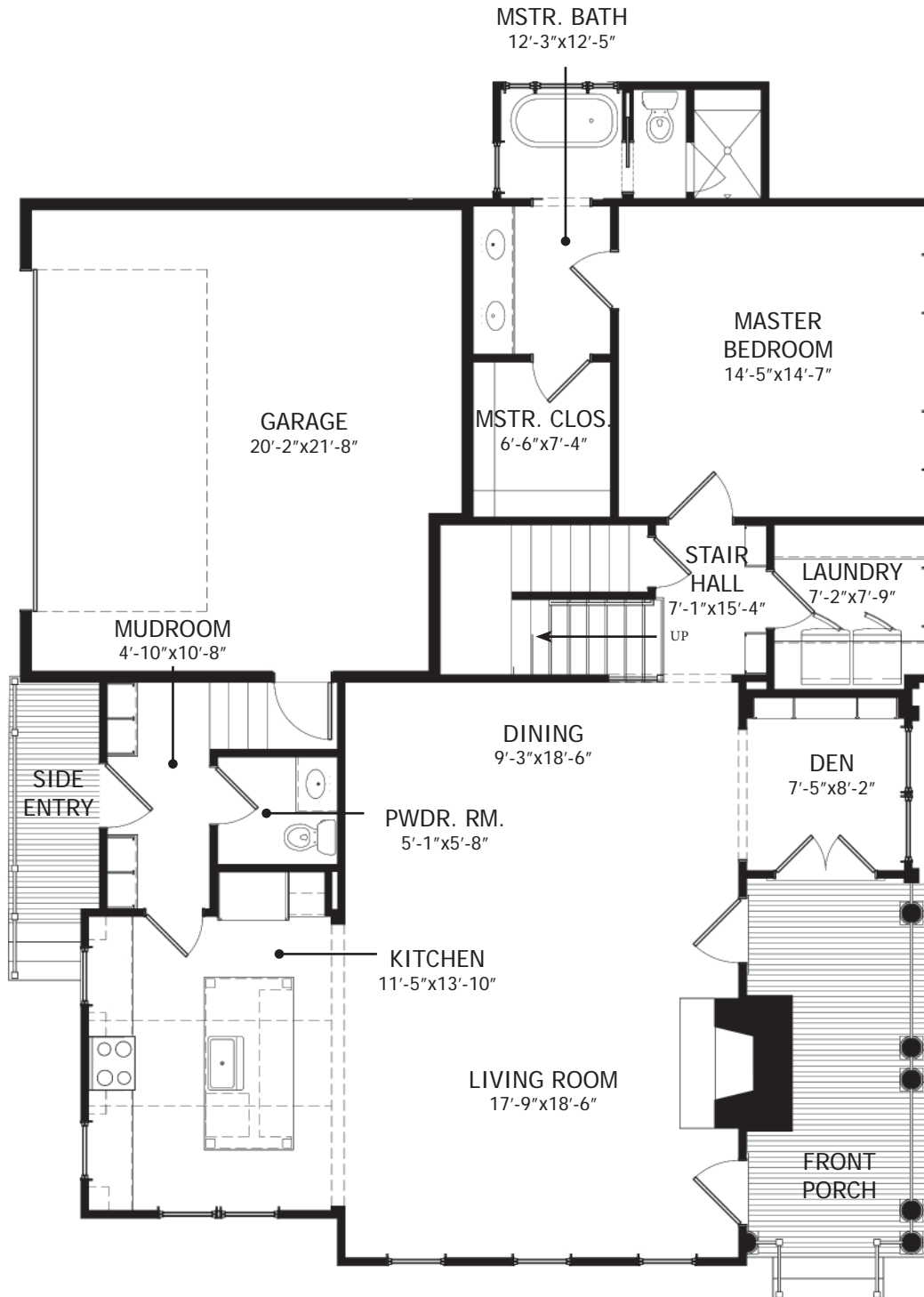
F I R S T F L O O R P L A N

HOBBS UNIT 1A - SCALE: 1/8" = 1'-0"



S E C O N D F L O O R P L A N

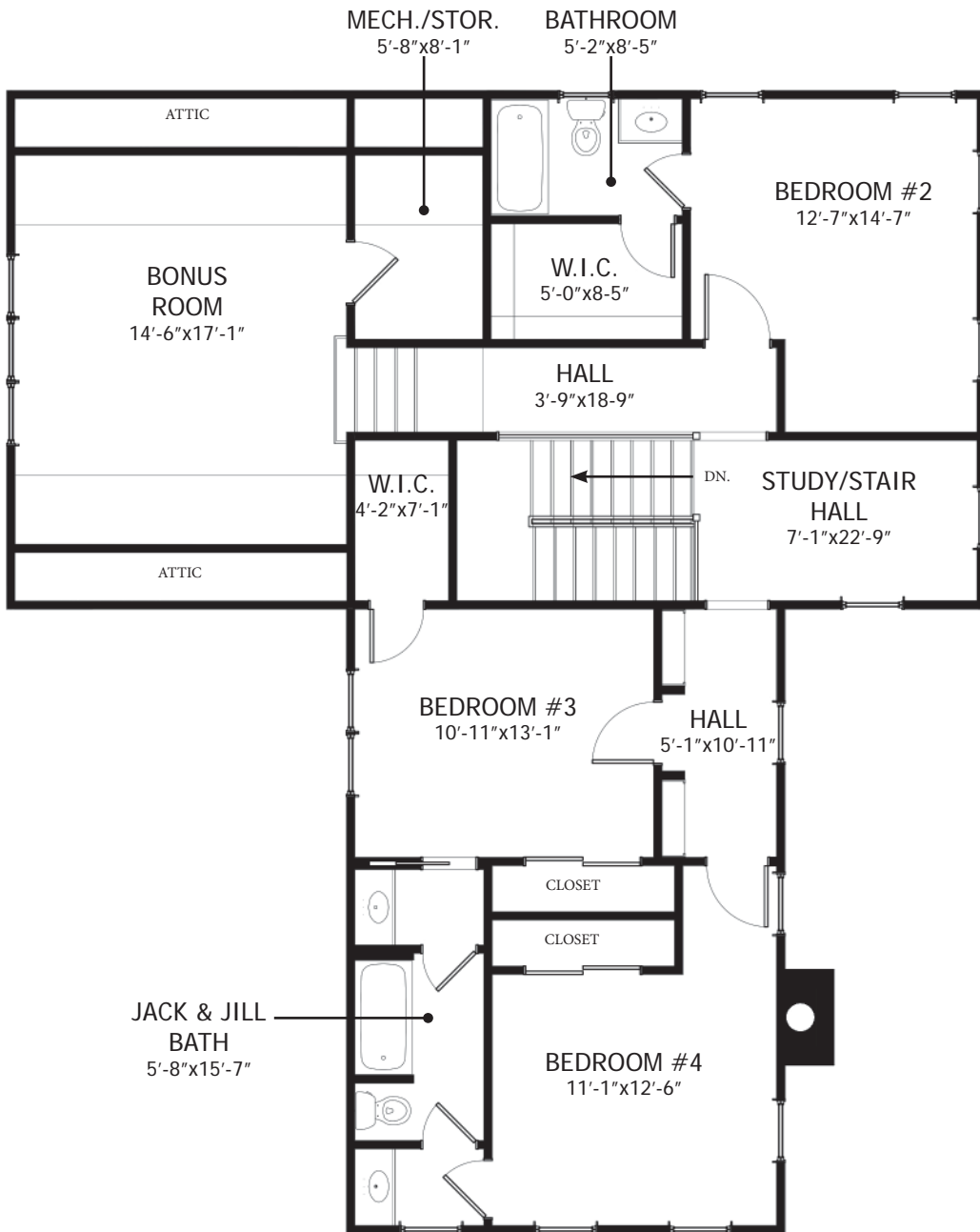
HOBBS UNIT 1A - SCALE: 1/8" = 1'-0"



| SQUARE FOOTAGE                  |            |
|---------------------------------|------------|
| <b>FIRST FLOOR</b>              |            |
| CONDITIONED                     | 1,472 S.F. |
| PORCHES                         | 137 S.F.   |
| GARAGE                          | 453 S.F.   |
| <b>SECOND FLOOR</b>             |            |
| CONDITIONED                     | 1,401 S.F. |
| PORCHES                         | 0 S.F.     |
| TOTAL HEATED                    | 2,873 S.F. |
| TOTAL SQUARE FOOTAGE UNDER ROOF |            |
| 3,463 S.F.                      |            |

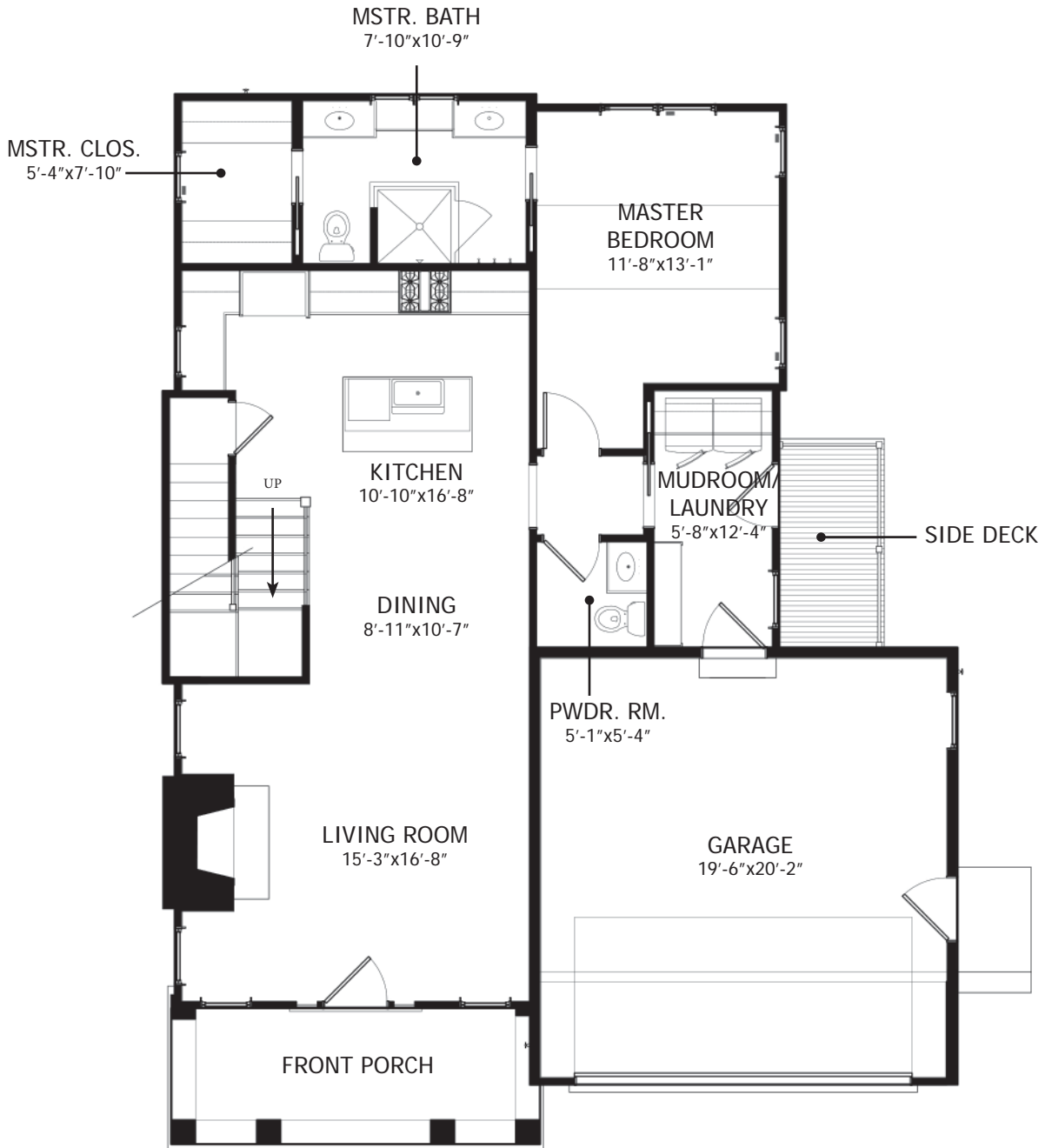
F I R S T F L O O R P L A N

HOBBS UNIT 1B - SCALE: 1/8" = 1'-0"



S E C O N D F L O O R P L A N

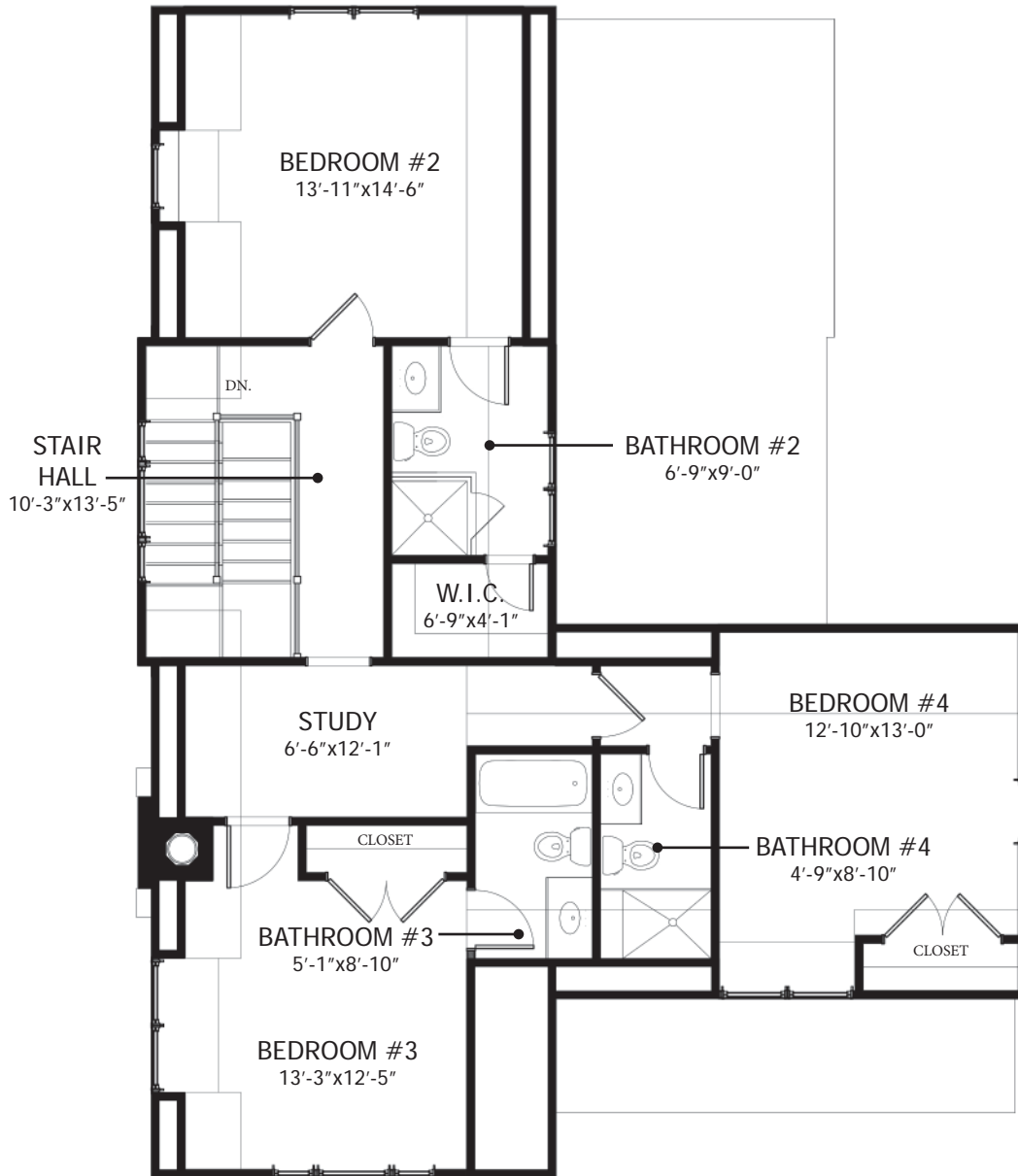
HOBBS UNIT 1B - SCALE: 1/8" = 1'-0"



| SQUARE FOOTAGE                  |            |
|---------------------------------|------------|
| <b>FIRST FLOOR</b>              |            |
| CONDITIONED                     | 1,066 S.F. |
| PORCHES                         | 113 S.F.   |
| GARAGE                          | 428 S.F.   |
| <b>SECOND FLOOR</b>             |            |
| CONDITIONED                     | 1,080 S.F. |
| PORCHES                         | 0 S.F.     |
| TOTAL HEATED                    | 2,146 S.F. |
| TOTAL SQUARE FOOTAGE UNDER ROOF |            |
| 2,687 S.F.                      |            |

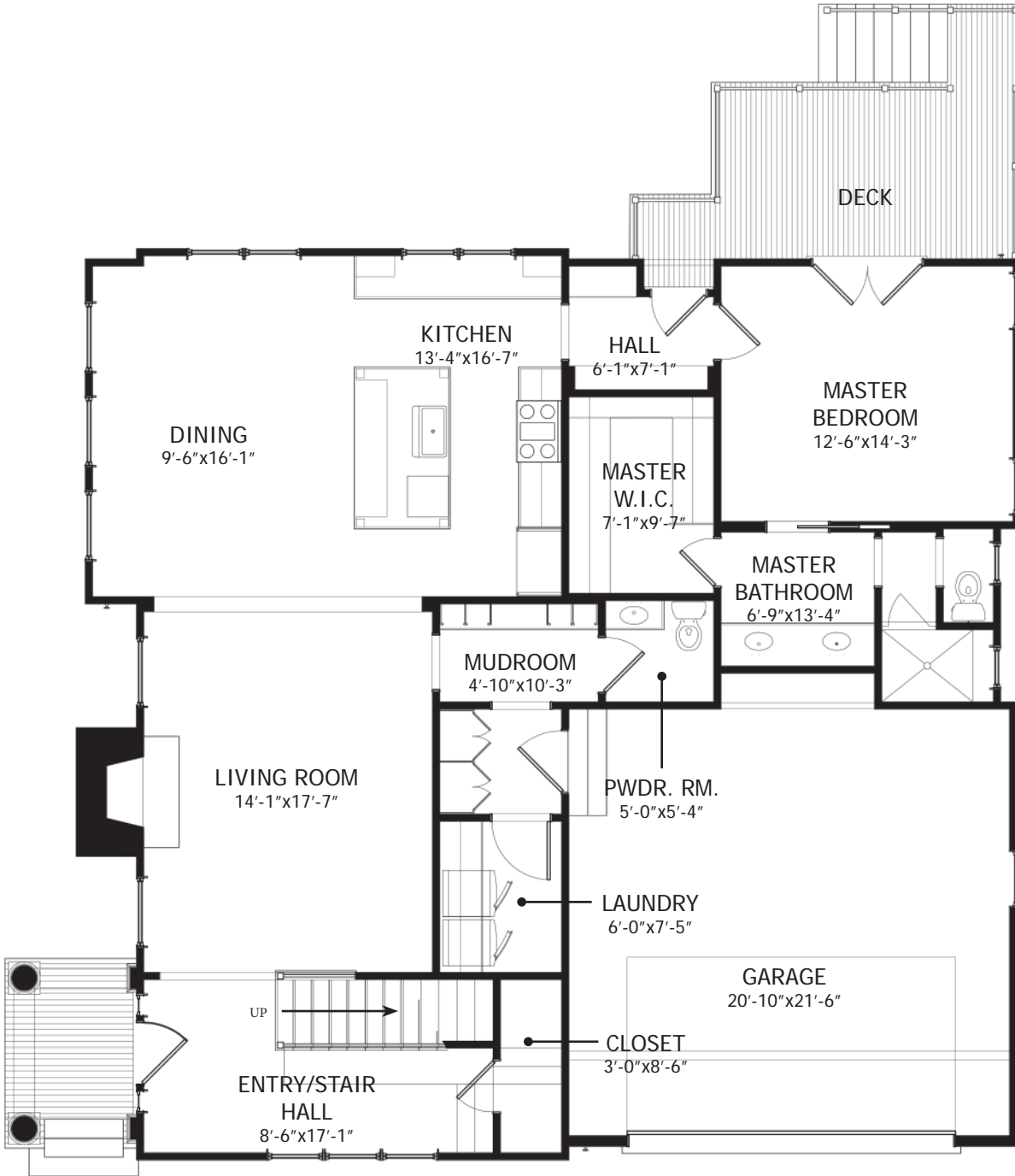
F I R S T F L O O R P L A N

HOBBS UNIT 2A - SCALE: 1/8" = 1'-0"



S E C O N D F L O O R P L A N

HOBBS UNIT 2A - SCALE: 1/8" = 1'-0"



| SQUARE FOOTAGE                  |            |
|---------------------------------|------------|
| <b>FIRST FLOOR</b>              |            |
| CONDITIONED                     | 1,427 S.F. |
| PORCHES                         | 50 S.F.    |
| GARAGE                          | 495 S.F.   |
| <b>SECOND FLOOR</b>             |            |
| CONDITIONED                     | 1,819 S.F. |
| PORCHES                         | 0 S.F.     |
| TOTAL HEATED                    | 3,246 S.F. |
| TOTAL SQUARE FOOTAGE UNDER ROOF |            |
| 3,791 S.F.                      |            |

# FIRST FLOOR PLAN

HOBBS UNIT 2B - SCALE: 1/8" = 1'-0"



**S E C O N D F L O O R P L A N**

HOBBS UNIT 2B - SCALE: 1/8" = 1'-0"